

TERMINAL CONNECTION

FIBER OPTIC TRANSITION BOX

PRODUCT + BENEFITS

- + IP 68 rated
- + Very compact (< 0.4 liters)
- + Slots for 6 mm Ø drop cables
- + Up to 4 smoooves
- + Indoor, facade, or pole mountable



PRÉSENTATION

This sealed box serves as a sleeve, and is designed especially for FTTH subscriber line rollout and maintenance.

The box has two slots for 6 mm diameter cables and can be used to connect or repair two drop cables with up to four fibers.

- Material: PC
- Color: Black
- IP 68 rated
- Mechanical resistance IK 08

Capacity:

- 6mm Ø cable slots
- Up to 4 45 mm to 60 mm splice protection sleeves

Routing path for G657 fibers

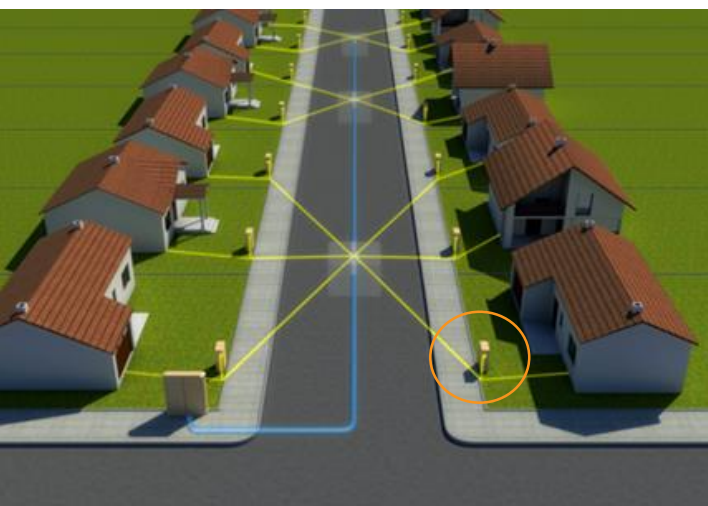
Outside dimensions (L x H x W): 160 mm x 89 mm x 28 mm

TERMINAL CONNECTION

FIBER OPTIC TRANSITION BOX

USES

Shared Access Point (SAP)

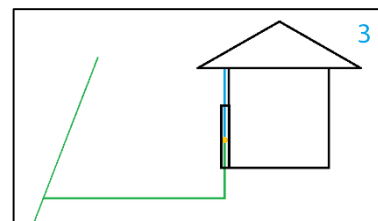
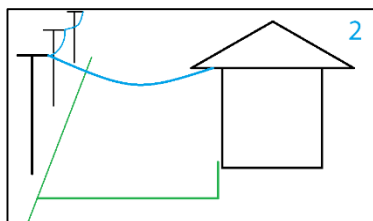
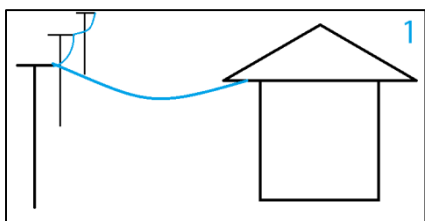


Manhole

Utility cabinet

Fiber optic transition box to connect new single-family dwellings to the housing development riser as required by French decree no. 2016-1182 of August 30, 2016, which "extends the fiber optic access requirement to the home for buildings containing a single home (single-family dwellings)" and by the French cabling standard XPC 90486.

Underground network connection box



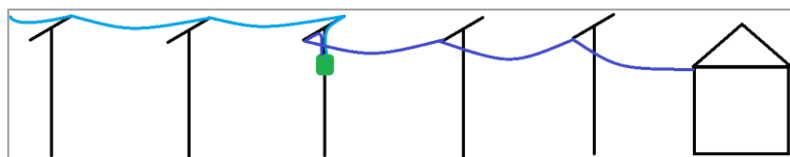
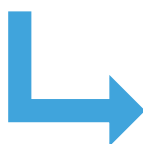
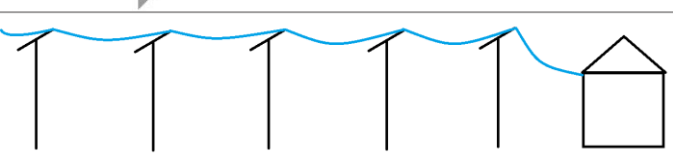
Sealed box designed to protect the connection between the new underground cable and the old cable.

Omelcom is committed to providing superior service and product performance. The product features in this document are subject to change without notice.

TERMINAL CONNECTION

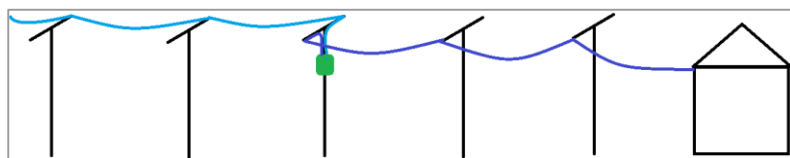
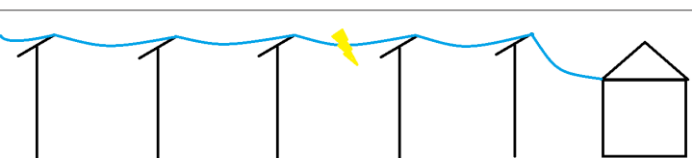
FIBER OPTIC TRANSITION BOX

USES



Subscriber cable segment connection box

Sealed box used to divide a very long subscriber cable into several segments (isolated rural homes). The use of the segment connection box enables faster, more cost-effective maintenance and repairs in the event of any network issues.



Subscriber cable repair box

Sealed box used to connect the existing functioning cable and the new cable to replace a damaged cable.

ORDERING INFORMATION

PART NO.	PART NAME	Pcs.
CO191	IP68 FIBER OPTIC TRANSITION BOX	1

Omelcom is committed to providing superior service and product performance. The product features in this document are subject to change without notice.